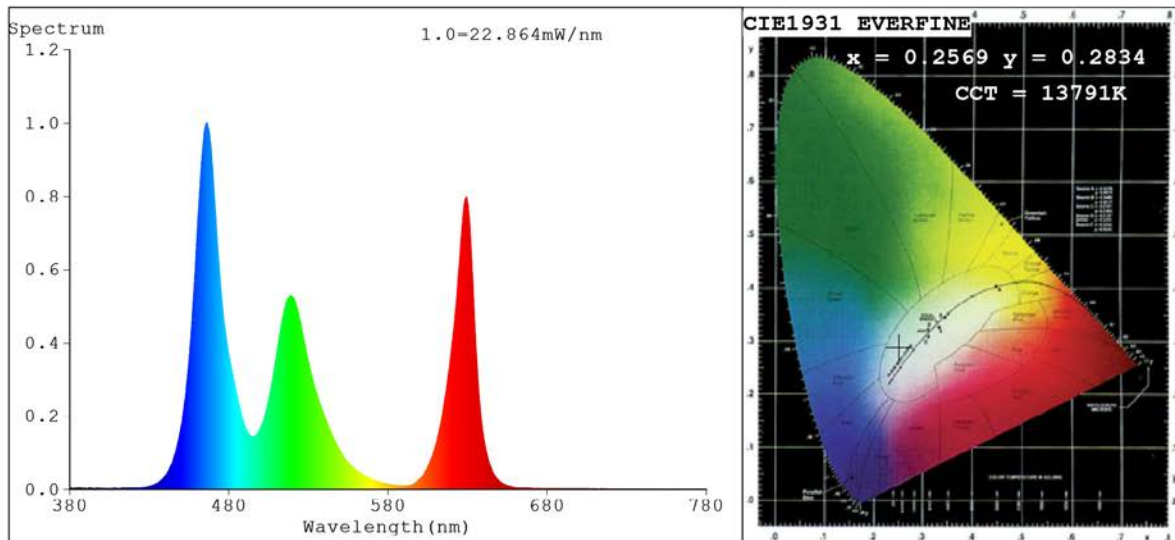


## Spectrum Test Report



### Color Parameters:

Chromaticity Coordinate:  $x=0.2569$   $y=0.2834$   $u'=0.1745$   $v'=0.4333$   
 CCT=13791K(Duv=0.0127) Dominant WL:Ld =482.8nm Purity=30.1%  
 Ratio:R=22.5% G=65.6% B=11.9%;;Peak WL:Lp=466.2nm FWHM=18.5nm  
 Render Index:Ra=47.0 CRI=42.9 TM30:Rf=42 Rg=108 Lav=513.6nm  
 R1 =32 R2 =59 R3 =72 R4 =52 R5 =54 R6 =53 R7 =53  
 R8 =1 R9 =0 R10=4 R11=45 R12=61 R13=35 R14=80 R15=15

### Photo Parameters:

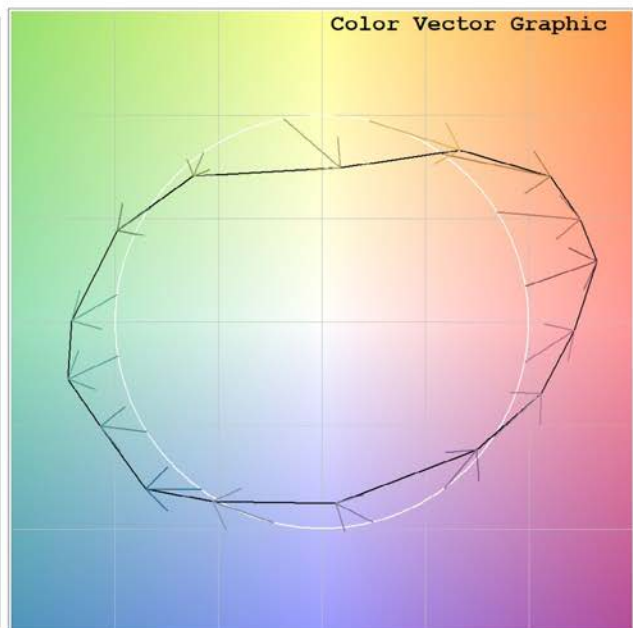
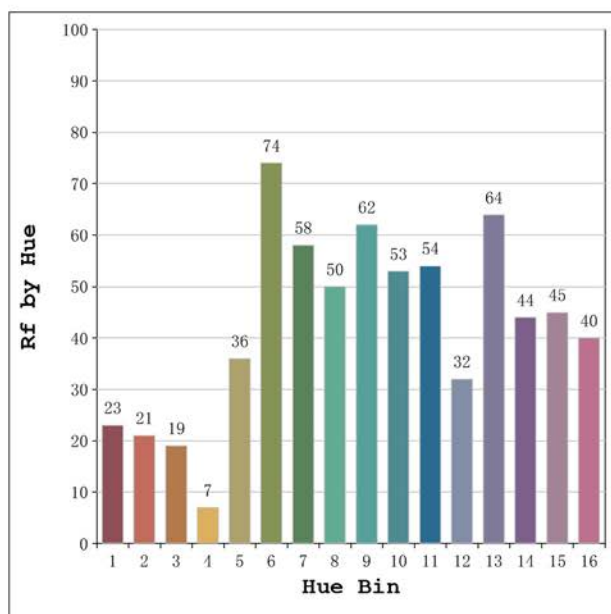
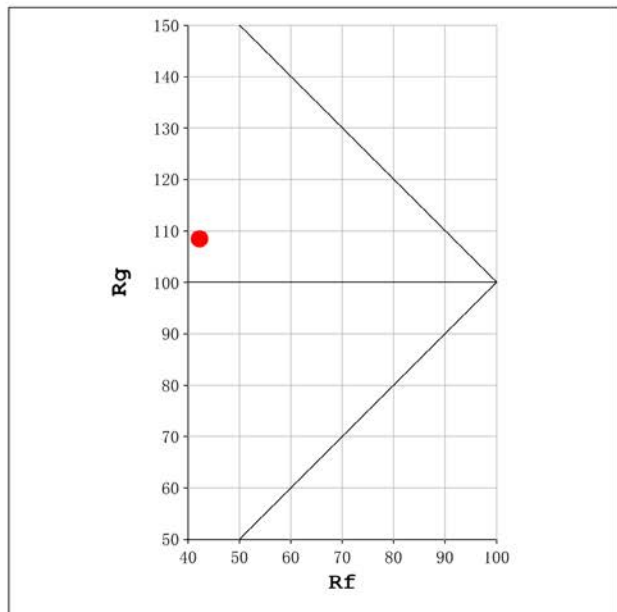
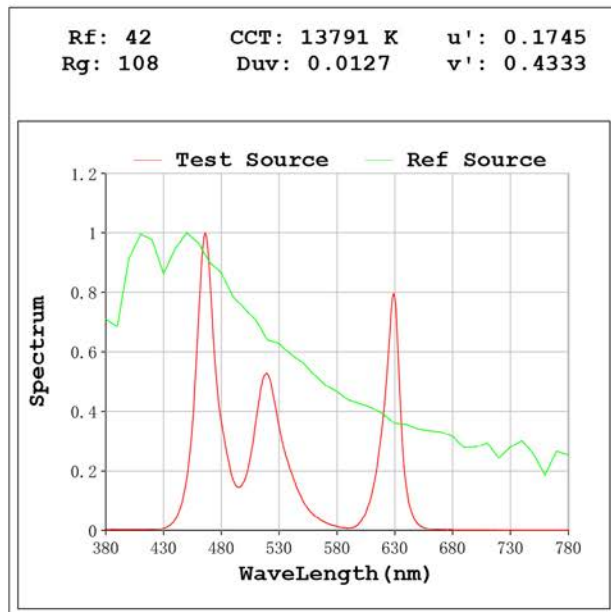
Flux = 307.7 lm Eff. : 32.86 lm/W Fe = 1.280 W

### Electrical parameters:

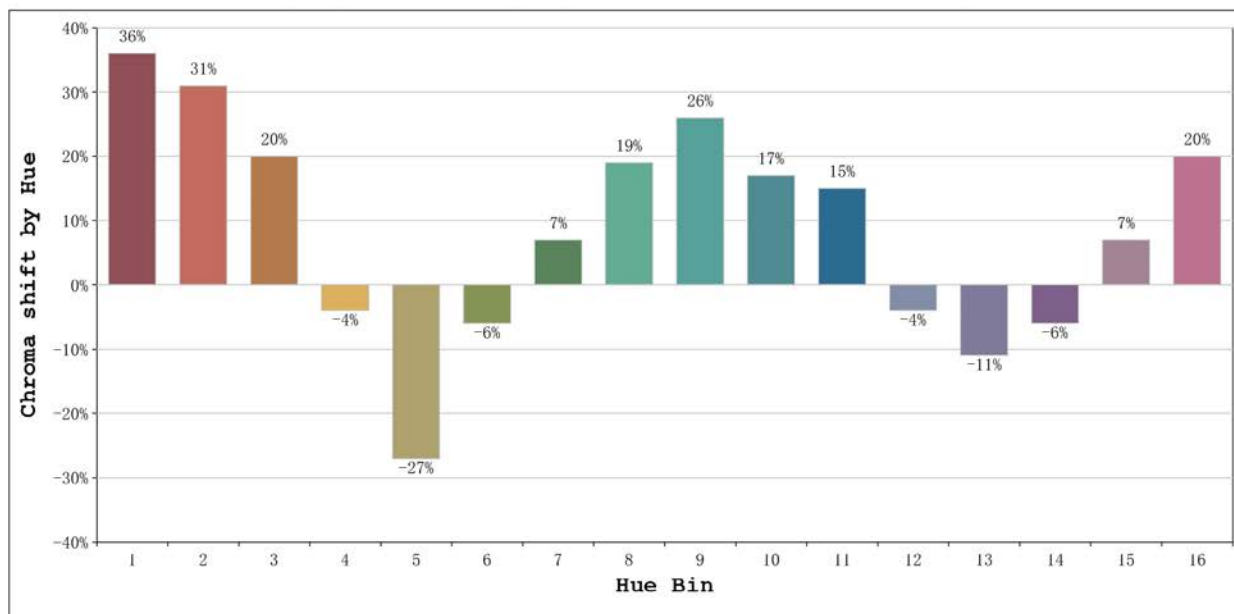
V = 230.15 V I = 0.04794 A P = 9.364 W PF = 0.8488

Status: Integral T = 925 ms Ip = 32564 (50%)

Model:Ecoled Inifinity RGB (R+G+B)Number: 34.057	Date:2024-11-21 14:38:10
Tester:Sergio Carneros	Humidity:35%
Temperature:27Deg	Remarks:100cm de tira flexible
Manufacturer:Luz Negra	



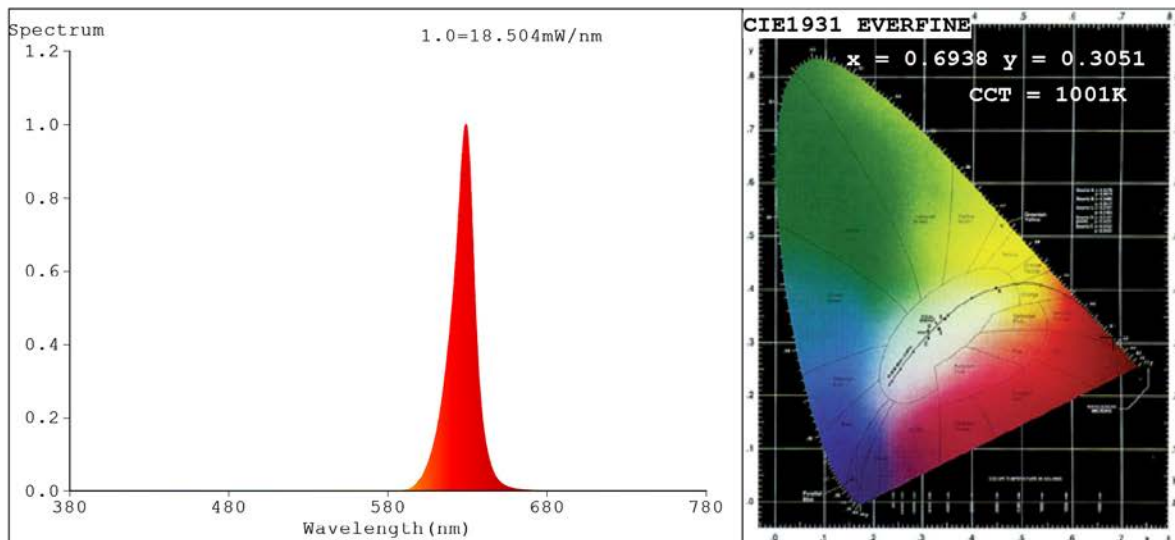
Model:Ecoled Inifinity RGB (R+G+B)Number: 34.057  
 Tester:Sergio Carneros      Date:2024-11-21 14:38:10  
 Temperature:27Deg      Humidity:35%  
 Manufacturer:Luz Negra      Remarks:100cm de tira flexible



			Graphic shift(%)	
Hue Bin	Hue Angle	Rf	Chroma	Hue
1	0.0° - 22.5°	23	36	5
2	22.5° - 45.0°	21	31	-24
3	45.0° - 67.5°	19	20	-49
4	67.5° - 90.0°	7	-4	-45
5	90.0° - 112.5°	36	-27	-21
6	112.5° - 135.0°	74	-6	10
7	135.0° - 157.5°	58	7	18
8	157.5° - 180.0°	50	19	17
9	180.0° - 202.5°	62	26	6
10	202.5° - 225.0°	53	17	-14
11	225.0° - 247.5°	54	15	-22
12	247.5° - 270.0°	32	-4	-30
13	270.0° - 292.5°	64	-11	-15
14	292.5° - 315.0°	44	-6	23
15	315.0° - 337.5°	45	7	30
16	337.5° - 360.0°	40	20	20

Model:Ecoled Inifinity RGB (R+G+B)Number: 34.057  
 Tester:Sergio Carneros Date:2024-11-21 14:38:10  
 Temperature:27Deg Humidity:35%  
 Manufacturer:Luz Negra Remarks:100cm de tira flexible

## Spectrum Test Report



### Color Parameters:

Chromaticity Coordinate:  $x=0.6938$   $y=0.3051$  /  $u'=0.5262$   $v'=0.5207$   
 CCT=1001K (Duv=-0.0787) Dominant WL:  $L_d = 621.7\text{nm}$  Purity=99.7%  
 Ratio: R=98.2% G=1.8% B=0.0%; Peak WL:  $L_p = 629.0\text{nm}$  FWHM=14.6nm  
 Render Index:  $R_a = 24.8$  CRI=31.0 TM30:  $R_f = 4$   $R_g = -1$   $L_{av} = 627.3\text{nm}$   
 R1 = 3 R2 = 79 R3 = 25 R4 = 0 R5 = 0 R6 = 91 R7 = 0  
 R8 = 0 R9 = 0 R10 = 72 R11 = 0 R12 = 78 R13 = 29 R14 = 56 R15 = 0

### Photo Parameters:

Flux = 71.15 lm Eff. : 19.50 lm/W  $P_e = 335.0$  mW

### Electrical parameters:

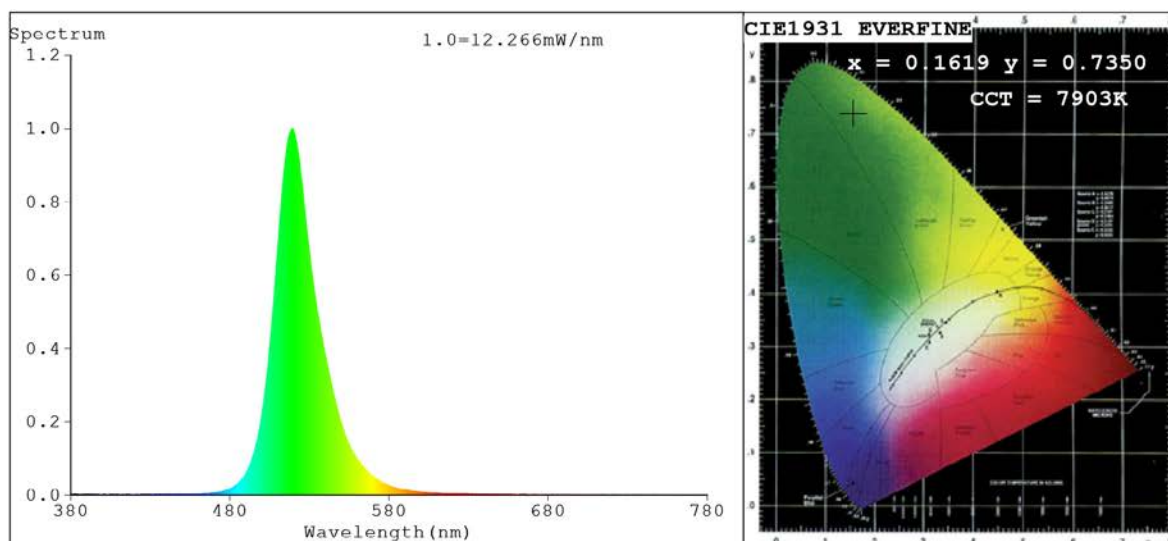
V = 230.13 V I = 0.02903 A P = 3.648 W PF = 0.5461

Status: Integral T = 1624 ms  $I_p = 53056$  (81%)

Model: Ecoled Inifinity RGB (R)  
 Tester: Sergio Carneros  
 Temperature: 27Deg  
 Manufacturer: Luz Negra

Number: 34.057  
 Date: 2024-11-21 14:39:16  
 Humidity: 35%  
 Remarks: 100cm de tira flexible

## Spectrum Test Report



### Color Parameters:

Chromaticity Coordinate:  $x=0.1619$   $y=0.7350$   $u'=0.0563$   $v'=0.5754$   
 CCT=7903K (Duv=0.1609) Dominant WL:Ld =526.3nm Purity=82.3%  
 Ratio:R=0.3% G=98.2% B=1.5%;;Peak WL:Lp=519.0nm FWHM=28.0nm  
 Render Index:Ra=0.0 CRI=2.5 TM30:Rf=0 Rg=7 Lav=522.4nm  
 R1 =0 R2 =0 R3 =0 R4 =0 R5 =0 R6 =0 R7 =0  
 R8 =0 R9 =0 R10=0 R11=0 R12=0 R13=0 R14=35 R15=0

### Photo Parameters:

Flux = 204.5 lm Eff. : 56.57 lm/W Fe = 419.7 mW

### Electrical parameters:

V = 230.13 V I = 0.02863 A P = 3.616 W PF = 0.5488

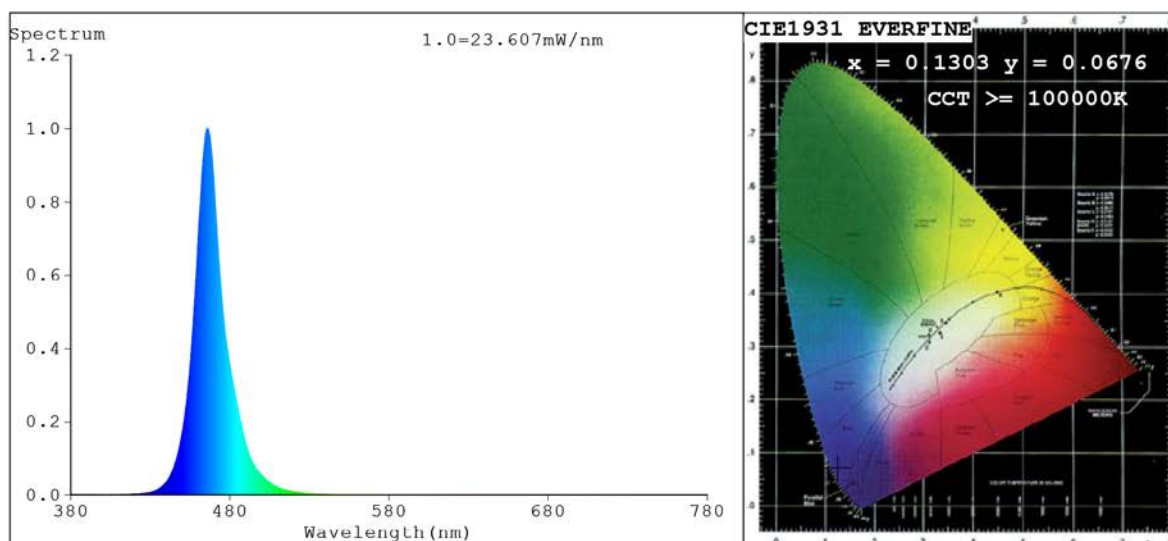
Status: Integral T = 1624 ms Ip = 43002 (66%)

Model:Ecoled Inifinity RGB (G)  
 Tester:Sergio Carneros  
 Temperature:27Deg  
 Manufacturer:Luz Negra

Number: 34.057  
 Date:2024-11-21 14:40:16  
 Humidity:35%  
 Remarks:100cm de tira flexible



## Spectrum Test Report



### Color Parameters:

Chromaticity Coordinate:  $x=0.1303$   $y=0.0676$  /  $u'=0.1468$   $v'=0.1713$   
 CCT=100000K (Duv=0.1555) Dominant WL:  $\lambda_d = 470.2\text{nm}$  Purity=96.8%  
 Ratio: R=0.3% G=15.4% B=84.3%; Peak WL:  $\lambda_p = 465.6\text{nm}$  FWHM=18.3nm  
 Render Index: Ra=0.3 CRI=0.2 TM30: Rf=0 Rg=-61 Lav=467.5nm  
 R1 = 0 R2 = 0 R3 = 0 R4 = 0 R5 = 3 R6 = 0 R7 = 0  
 R8 = 0 R9 = 0 R10 = 0 R11 = 0 R12 = 0 R13 = 0 R14 = 0 R15 = 0

### Photo Parameters:

Flux = 40.71 lm Eff. : 11.35 lm/W Fe = 558.0 mW

### Electrical parameters:

V = 230.15 V I = 0.02829 A P = 3.586 W PF = 0.5507

Status: Integral T = 1624 ms Ip = 58953 (90%)

Model: Ecoled Inifinity RGB (B)  
 Tester: Sergio Carneros  
 Temperature: 27Deg  
 Manufacturer: Luz Negra

Number: 34.057  
 Date: 2024-11-21 14:40:41  
 Humidity: 35%  
 Remarks: 100cm de tira flexible